



Fitting Instructions

0785 Patriot Plus Flag Hinge

Hinge Part Numbers:

0785-2001 = 16mm Step Height

0785-2002 = 19mm Step Height

0785-2003 = 22mm Step Height

Shim Part Numbers:

0785-014-1 = 1mm Height

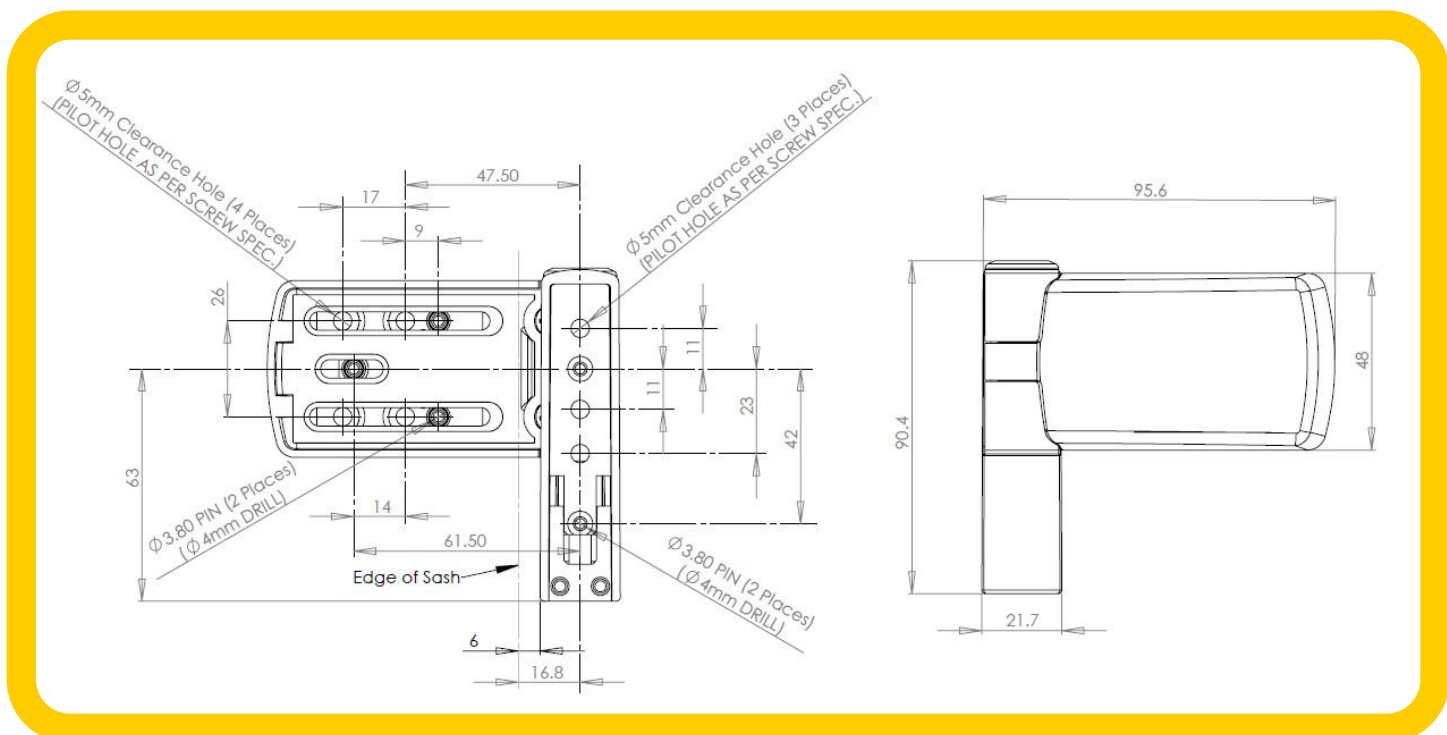
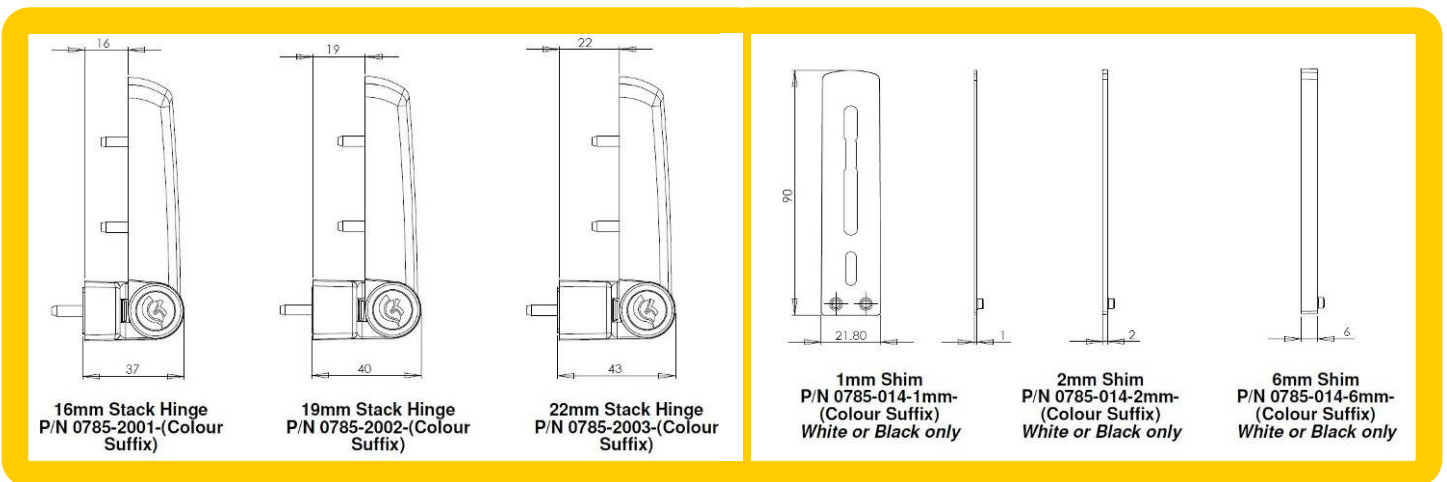
0785-014-2 = 2mm Height

0785-014-6 = 6mm Height

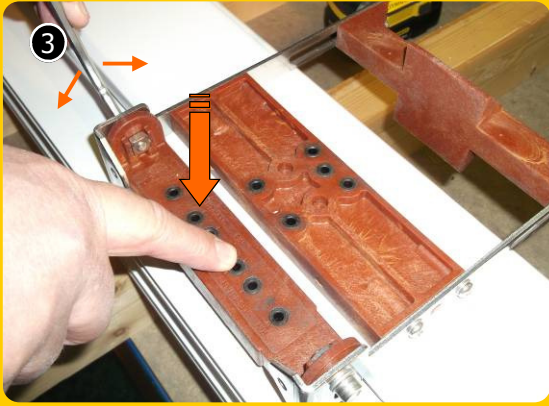
Jig Part Number:

Jig-0036

Dimensional Data:



Drilling Preparation



Adjust step height of jig by sliding frame block down until it sits on frame - Tighten with 5mm Allen key

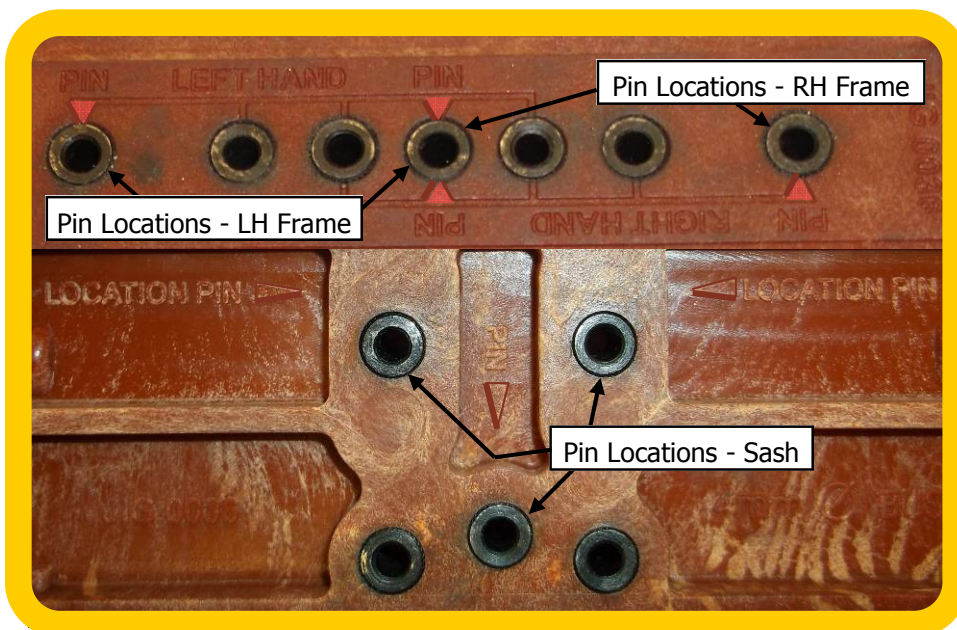


Adjust grip onto sash by sliding clamp block until it sits on inner edge of sash - Tighten with 5mm Allen key

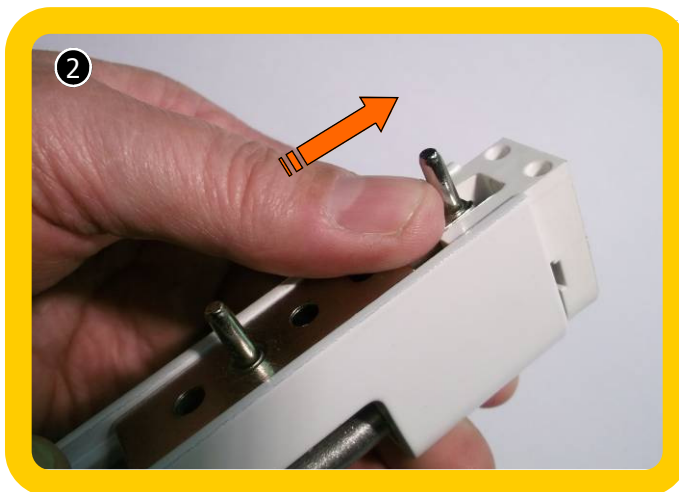
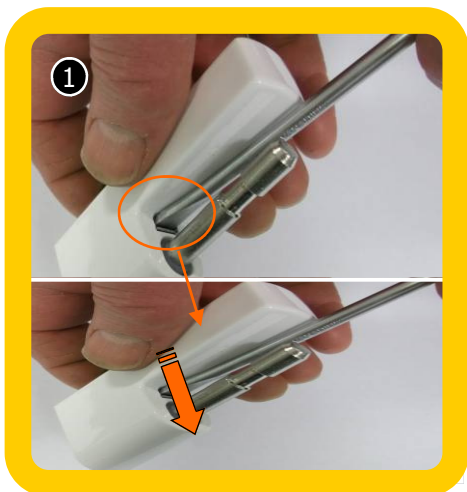


Using a $\text{Ø}4.0\text{mm}$ drill bit, drill through the skin of the profile only, at the Pin Locations as shown below and as marked on jig. Note: only drill Left or Right Hand pin locations as required when drilling the frame side. If not using drill point screws continue to pilot the remainder of the holes as required

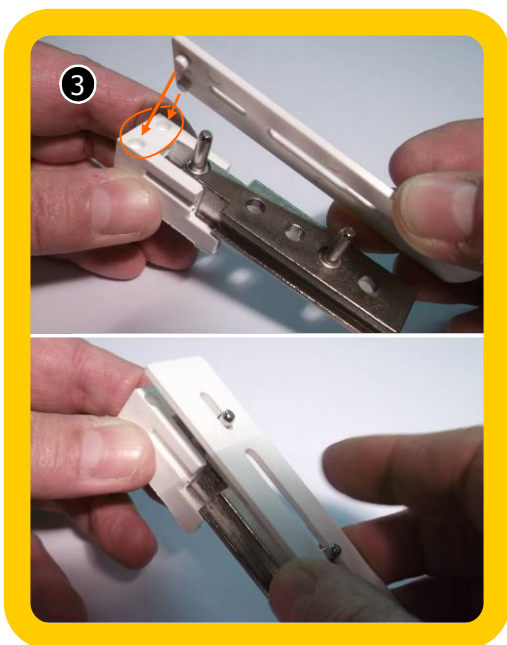
- Jig is symmetrical and can be used for either hand as required
- Recommended screw size $\text{Ø}4.8\text{mm}$ —select suitable screw type for the reinforcing being used



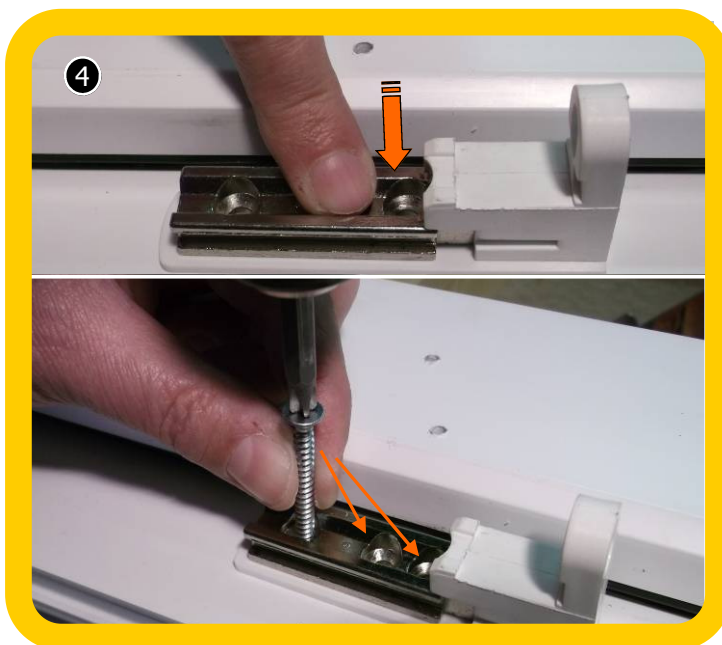
Fitting to Frame:



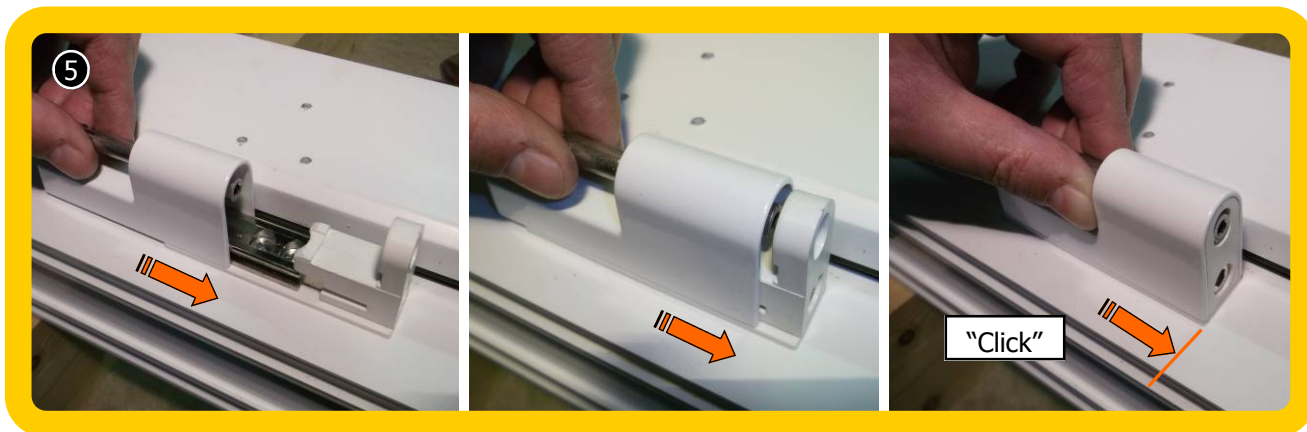
Hinge will normally be supplied unlatched. However, if it is necessary to remove Frame Mount insert flat screwdriver behind metal tang and lever towards Pivot Pin. With screw driver still in place, slide Frame Mount out as shown



Fit shim as shown if required. Locate the 2 pins into the corresponding holes on the Frame Mount Moulding



Align location pins with holes in frame, insert the pins and push the Frame Mount fully down. Secure in place with screws in 3 places ensure screws are the correct length to engage with reinforcing

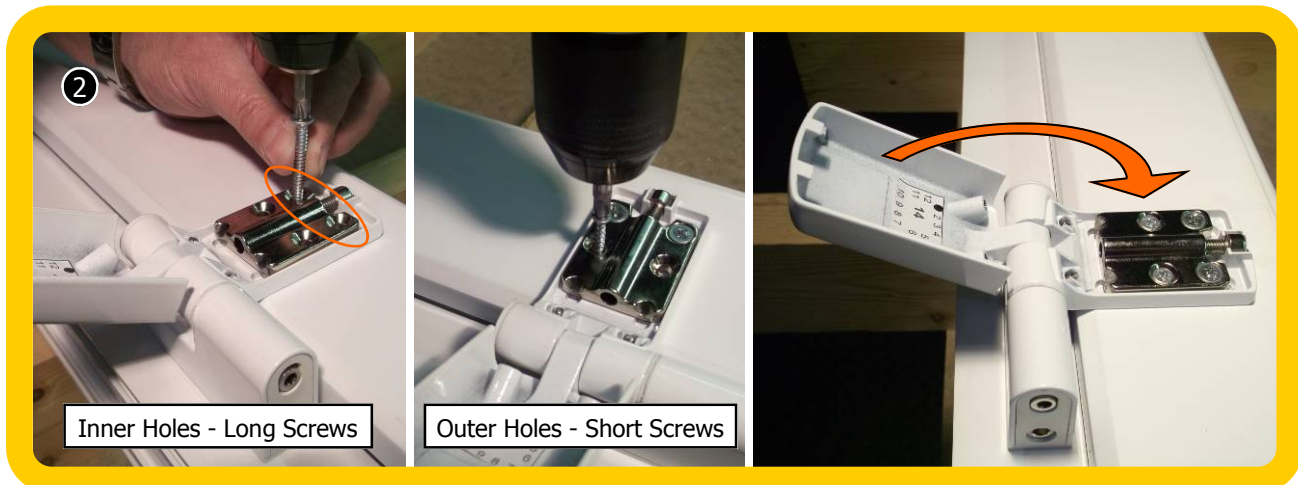


Slide Frame Body casting onto Frame Mount and push all the way down until it clicks into place and until it is flush with the bottom of the Frame Mount Moulding

Fitting to Sash:



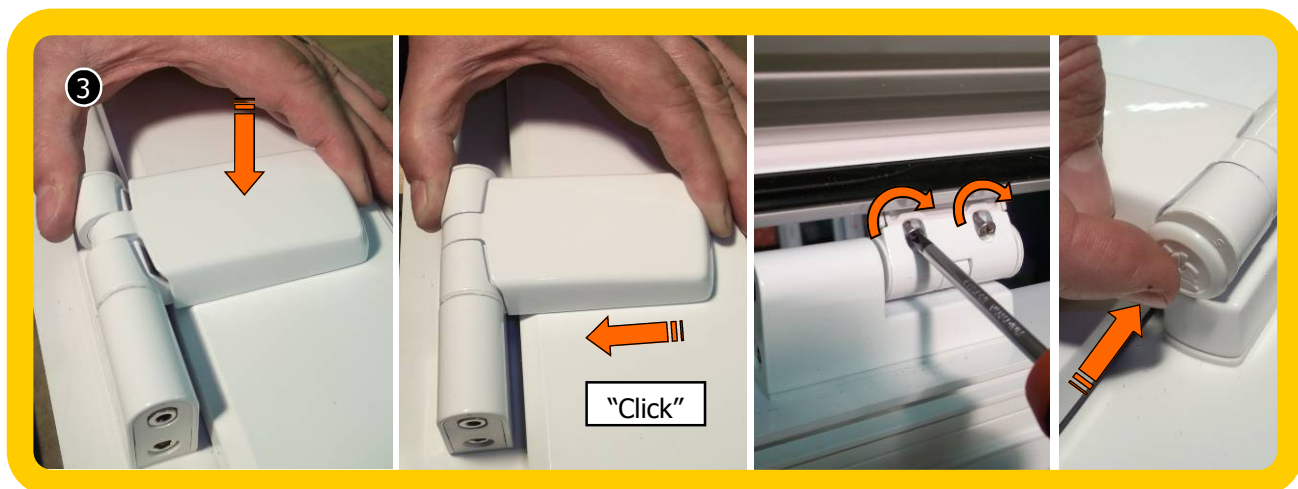
Slide Flag Assembly onto Frame Mount Pivot Pin and push all the way down. Align location pin holes with Sash Plate. Insert the Screw Plate with Location pins into pre drilled holes and push fully down.



Inner Holes - Long Screws

Outer Holes - Short Screws

Secure Screw Plate with 2 x $\text{Ø}4.8\text{mm}$ screws in the inner holes ensuring they are the correct length to engage with reinforcing
Use 2 x shorter screws in the outer holes ensuring they are the correct length to avoid breaking out on the other side then rotate the cover to closed position



Ensuring Flag Cover is flat down on profile. Push Flag Cover back towards Frame Mount until it clicks into place.

Lift Sash to expose Flag Cover Retention Screws on underside. Fully tighten screws turning clockwise using cross head screwdriver. Replace Sash and fit Cover Cap as shown