



# Yale Postmaster Professional TS008 FD60 Letterplate

## Installation Guide



The Yale Postmaster Professional TS008 FD60 letterplate has been independently tested as part of a doorset to withstand at least 60 minutes of protection against fires. The letterplate passes the test requirements of BS 476-22:1987. This guide includes:

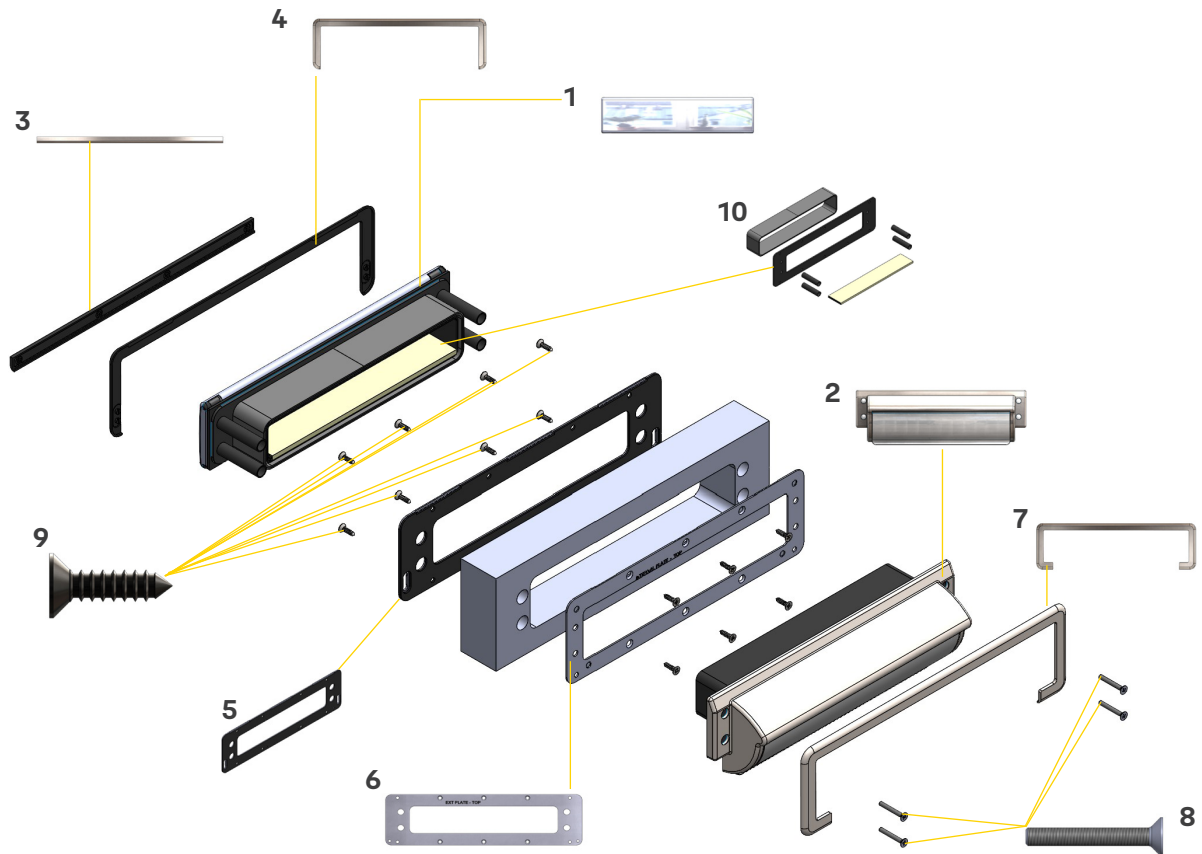
- Assembly Components
- Routing Prep
- Installation Instructions

**Trusted every day**



# Components

Before installing the Yale Postmaster Professional TS008 FD60 Letterplate, please check that all of the following components are present.



## Components

- |    |  |     |                          |
|----|--|-----|--------------------------|
| 1. | External letterplate assembly*             | 6.  | Internal fixing plate    |
| 2. | Internal letterplate                       | 7.  | Internal cover surround  |
| 3. | External bottom cover                      | 8.  | x4 Machine screw M4 x 30 |
| 4. | External cover surround                    | 9.  | x14 Self-tapping screws  |
| 5. | External fixing plate with adhered gasket* | 10. | Intumescent seals*       |

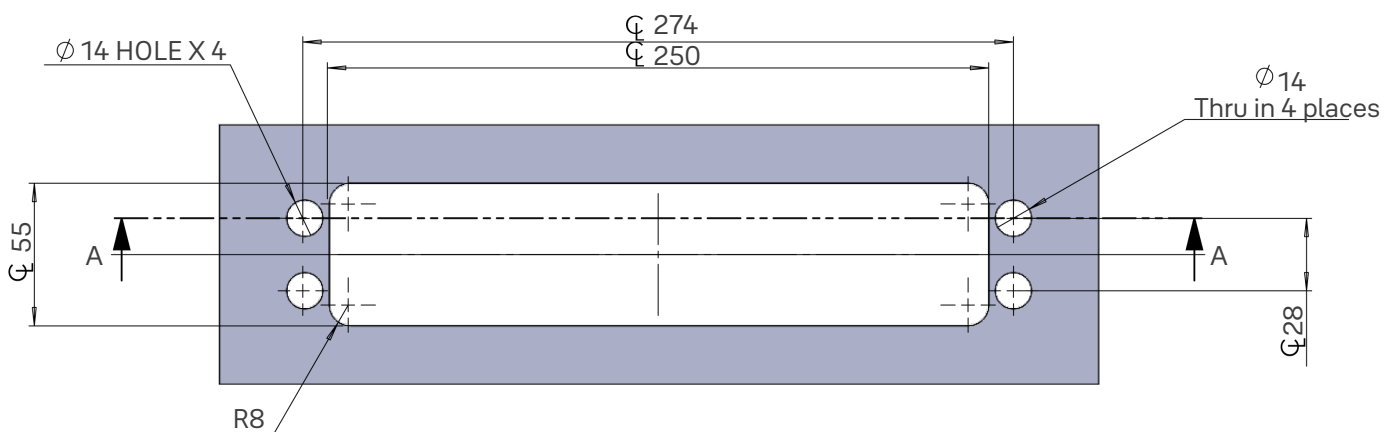
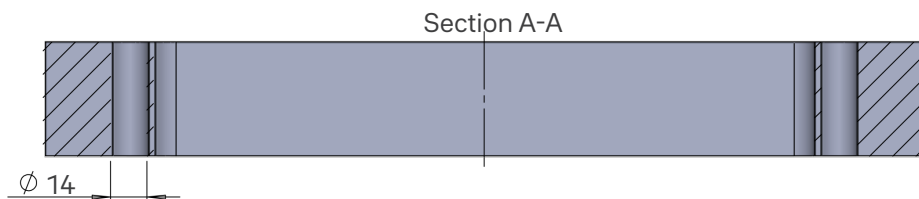
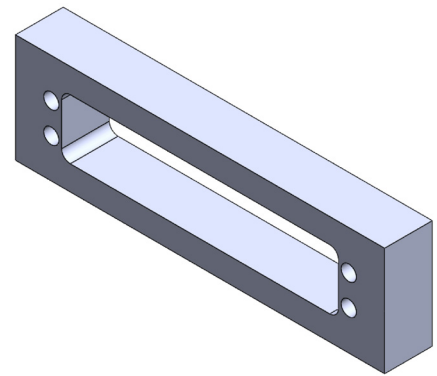
\* Three items supplied fully assembled



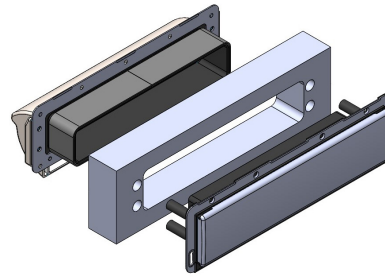
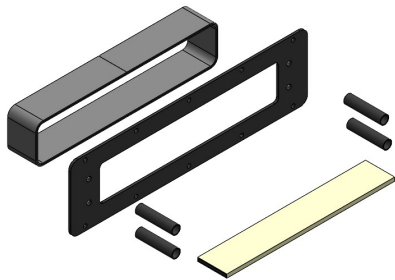
# Routing Prep

## Suitable for 44mm to 54mm door leafs

1. Mark out the aperture position for the letterplate at a minimum of 250mm and a maximum of 1700mm from the base of the door.
2. Mark the position for the aperture and holes for the securing posts following the dimensions which can be found on the routing prep.
3. Cut out the aperture with the appropriate tools, we recommend using CNC machine or a jigsaw or router.

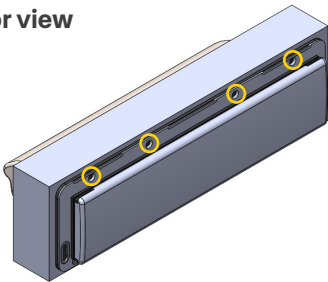


# Installation Instructions

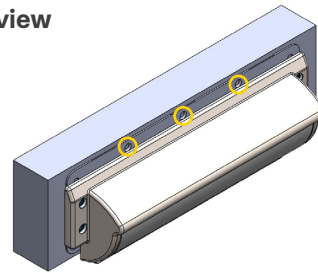


1. The Yale Postmaster letterplate is designed for use on firedoors and is supplied with all fire intumescent material pre-fitted. The intumescent material is a crucial fire door component, please do not proceed with the installation if all intumescent material is not present.
2. Position the external and internal letterplate assemblies into the aperture, to ensure the letterplate is aligned.

## External door view

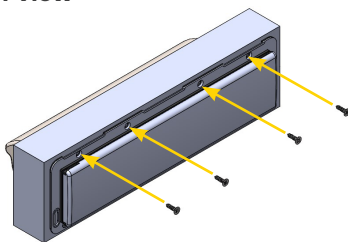


## Internal door view

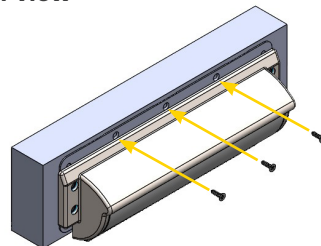


3. Pilot drill (3mm drill bit) the top fixing holes on the external fixing plate and repeat this step on the internal fixing plate.

## External door view

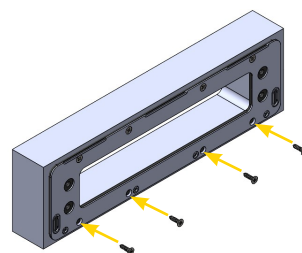
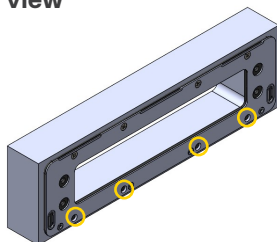


## Internal door view



4. Secure the external fixing plate in place using 4 x self-tapping screws, repeat this step on the internal fixing plate using 3 x self-tapping screws. The screws must be tight and sit flush against the fixing plate.

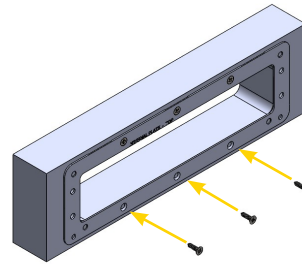
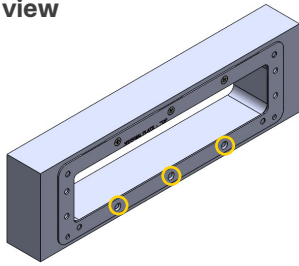
## External door view



5. Remove the external and internal letterplate assemblies from the door leaving only the fixing plates secured to the door and place them to one side. Pilot drill (3mm drill bit) the bottom 4 fixing holes on the external fixing plate and secure in place using 4 x self-tapping screws.

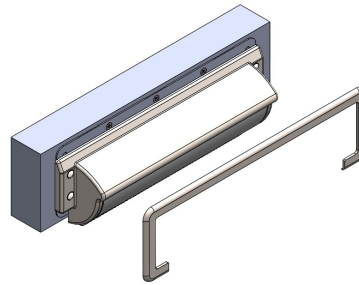
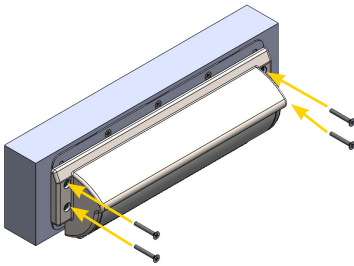
The screws must be tight and sit flush against the fixing plate.

### Internal door view

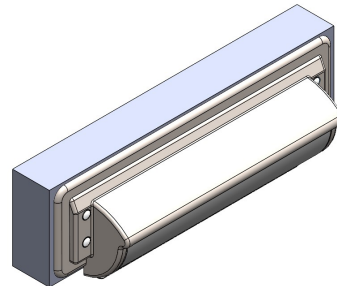
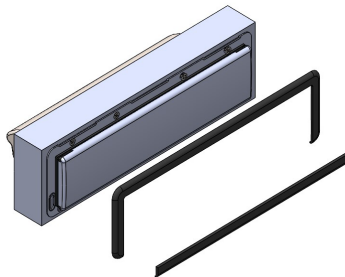


6. Pilot drill (3mm drill bit) the bottom 3 fixing holes on the internal fixing plate and secure in place using 3x self-tapping screws.

The screws must be tight and sit flush against the fixing plate.



7. Position the external letterplate assembly and internal letterplate assembly into the aperture and secure into place from the internal side using the 4 x M4 fixing screws provided. Push 4 screw cover caps in place.
8. On the internal side of the door, place the internal cover surround so that it is aligned with the x3 reliefs at the top of the internal plate and click into position.



9. On the external side of the door, slide the external cover surround over the external letterplate assembly so that it is aligned with the x3 reliefs at the top of the external plate and click into place. Next, align the external bottom cover with the x3 reliefs on the underside of the external letterplate assembly and click into place.
10. Your installation is now complete.

Please only remove the protective film after your door is fully installed.

**Disclaimer:** The Yale Postmaster Professional Letter Plate has been designed for use on independently accredited Fire Doors. Please ensure that you have the correct test evidence in place before using this product as part of a Fire Door assembly. Yale Door and Window Solutions does not hold or provide Fire Door test evidence for this product. The responsibility for ensuring its compliance is solely down to the door set manufacturer.





This installation manual is to be used in conjunction with the Postmaster Professional TS008 FD60 letterplate range.

**Partcode:** 0793-4000

#### THE YALE BRAND

Yale is trusted by millions of people every day to keep what's important to them safe. Their homes, families and belongings. Our innovations have protected homes and given peace of mind for 180 years. We have expanded from a mechanical lock innovator to leading the evolution of connected smart locks and homes. Because when we do things, we do them properly. We were there for your grandparents (and probably theirs) and we will be there for you. And for your children. Today, and every day to come.

Due to a continuous programme of development the company reserves the right to make alterations without notice. (Products which are not a stocked item will be subject to a longer lead time which needs to be agreed with your Yale representative).

Yale DWS  
School Street, Willenhall, West Midlands  
WV13 3PW, UK  
T: 01902 366800 F: 01902 369041  
[www.yaledws.co.uk](http://www.yaledws.co.uk)